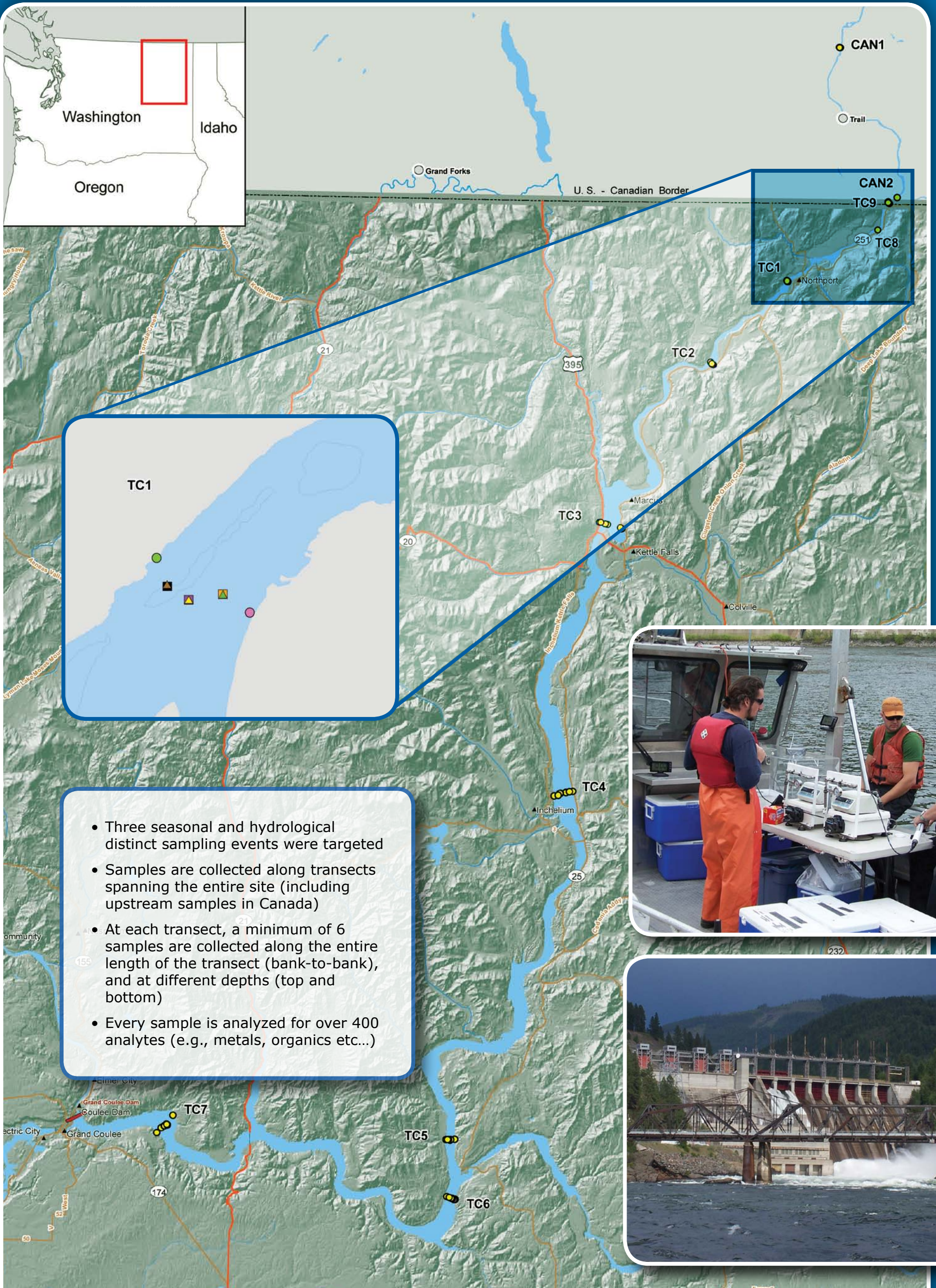
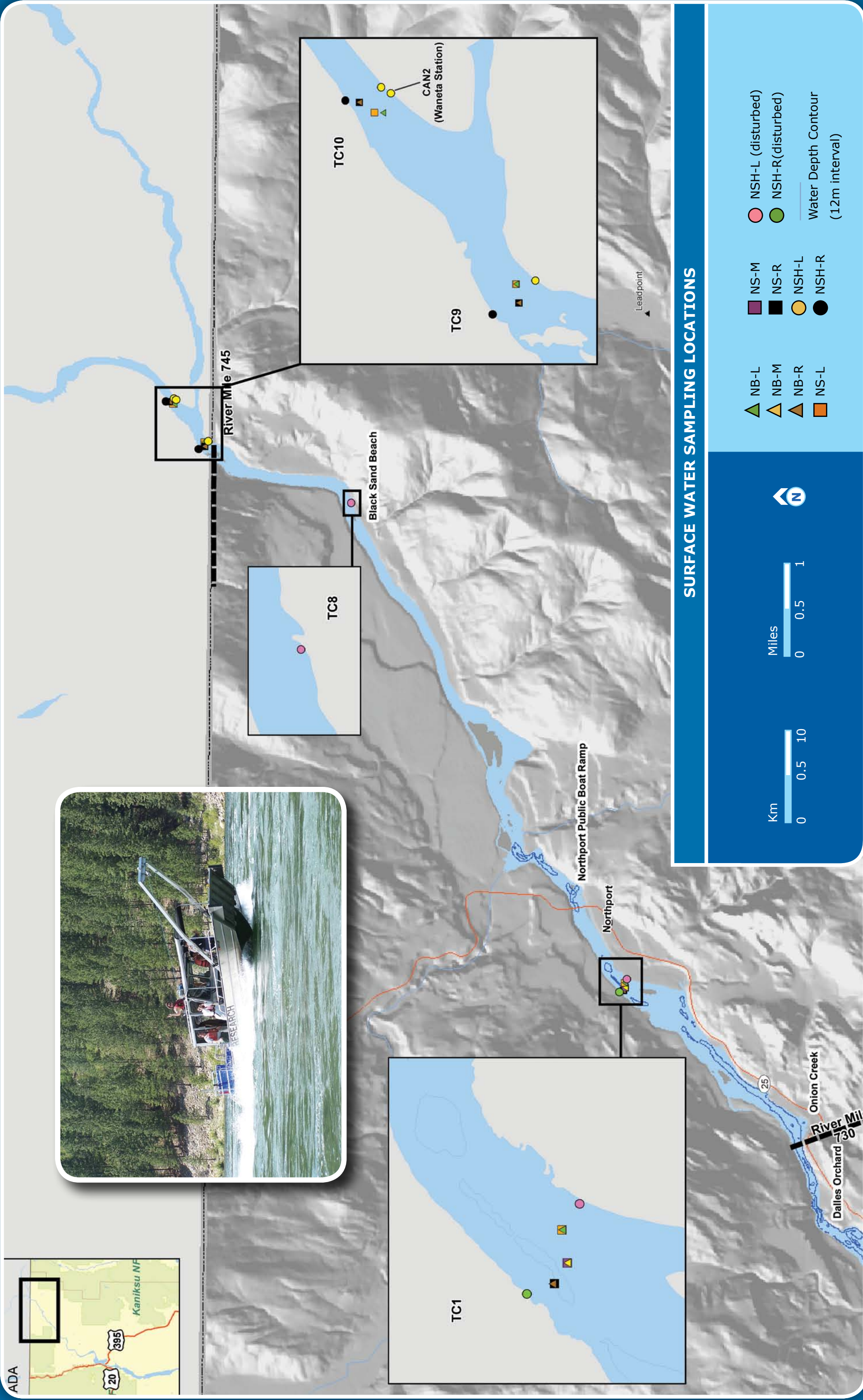


Upper Columbia River Project Surface Water Program



- Three seasonal and hydrological distinct sampling events were targeted
- Samples are collected along transects spanning the entire site (including upstream samples in Canada)
- At each transect, a minimum of 6 samples are collected along the entire length of the transect (bank-to-bank), and at different depths (top and bottom)
- Every sample is analyzed for over 400 analytes (e.g., metals, organics etc...)



SURFACE WATER SAMPLING LOCATIONS

- ▲ NB-L
- ▲ NB-M
- ▲ NB-R
- NS-L
- NS-M
- NS-R
- NSH-L
- NSH-R
- NSH-L (disturbed)
- NSH-R (disturbed)
- Water Depth Contour (12m interval)

